



TIME OFF/HOLLMAN/PIN

"It begins with a curse and an execution, then (follows with) murder after murder after murder."

the Trenton State production.

says Dale Simon, who is a scenic artist and plays the role of Banquo for

"This is truly an evil play,"

says Dale Simon, who is a scenic artist and plays

the role of Banquo for

see very little of the Macbeths, and they never appear together. Instead, we watch as the forces of good in Scotland (Malcolm and Macduff) band together.

One of the biggest challenges in *Macbeth* is making the play's tragic hero seem human.

"Indeed, this is a problem,"

Mr. Hogstrom admitted. "The basis for the play's communication with its audience is, empathy. We need to be able to identify with the protagonist, and how can we identify with a man who can say, 'It will have blood...blood will have blood,' and then order the murder of children?"

As Lady Macbeth, professional actress Janet Quattrone is new to Shakespeare.

"My training has been very American Method, and I am trying to many this working approach with Shakespeare," she says. "I am finding Lady Macbeth from the in-

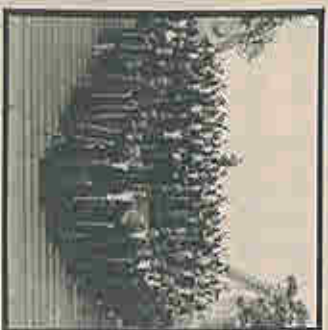
(Continued from Preceding Page)

goes limp in the final two acts, IV and V. Most of the action, including the murder of King Duncan, takes place in the first three acts, when the Macbeths' plans, driven by greed, make for the most powerful scenes in the play. During the last two acts, however, audiences

TUESDAY
APRIL 23, 1996
8:00 P.M.



RICHARDSON AUDITORIUM
IN ALEXANDER HALL
PRINCETON UNIVERSITY



Special Bonus Concert

ODESSA PHILHARMONIC ORCHESTRA

HOBART S. EARLE '83, Music Director

MAHLER: SYMPHONY NO. 10, ADAGIETTO
IVES: UNANSWERED QUESTION
DANKREYCH: TARAS SHEVCHENKO
JOHANN STRAUSS: GYPSY BARON OVERTURE
THE FIREFLY
THE VOICES OF SPRING

TICKETS: \$27, \$23, \$19
STUDENTS, \$2

(609) 258-5000

1995 PRINCETON
101ST YEAR UNIVERSITY
1996 CONCERTS

6 April 19, 1996 Time Off

NEXT WEEK!

THE TRIANGLE SHOW'S ACOMINI

The Princeton Triangle Club presents

PURRPT FICTION

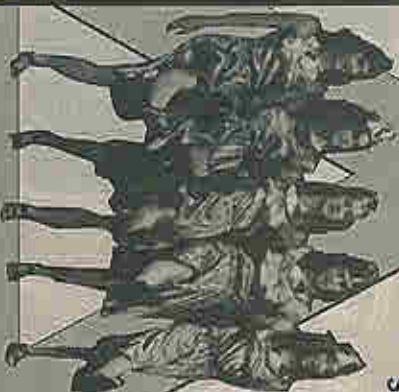
Friday, April 26 - 8 pm
Saturday, April 27 - 8 pm
Sunday, April 28 - 7:30 pm

Students with valid ID \$7.50

at McCARTER
THEATRE

Tickets Now at the
Box Office or

Charge-by-Phone
(609) 683-8000



side out. People have preconceptions of Lady Macbeth: she is often performed as a raging battle-ax. I am trying to find the human progression of her in the play. But will people accept the character choices I am making, especially the ones in the later scenes?"

Also unacquainted, until now with Shakespeare are many of the student actors, who make up half the cast. In playing Lady Macduff sophomore Janice Rowland has learned quite a bit.

"Shakespeare has made me aware of my voice," she explained. "I found I needed different qualities in my voice; flexibility, richness and tone. It helps me to refine my diction and enunciation."

"I find the words flow once you connect with your character," said Matthew Chiappardi, who plays an old man. "With Shakespeare, you find you have a lot to learn."

If the staging is any clue, Trenton State's *Macbeth* should fall in line with Shakespeare's vision. Included in the set are flats that look like huge stone walls, like those found in centuries-old Scottish castles. And the plaid costumes feature colors based on the dyes used in Macbeth's day. The murders, meanwhile, are violent and cold-blooded, and the pace set for the actors is vigorous.

Even more important, especially for the superstitious, is that the curse associated with "the Scottish play" seems to be dormant. ●

Macbeth is on stage in Kendall Hall Theatre, Trenton State College, Rt. 31, Ewing, through April 21. Showtimes: 8 p.m., Fri.-Sat., 2 p.m., Sun. Tickets cost \$14. For tickets and information: (609) 771-2551.

Boysenbury FABRIC CENTERS

Communion Veils
& Wedding Veils

GUARANTEED DELIVERY
OF YOUR SPECIAL ORDER

528 Rt. 33
Mercerville (Trenton)
(609) 586-1440

WORKING TOGETHER
LESSONS FROM
A JAZZ ENSEMBLE



Music and
Conversation with Jazz
Musician
JEFF PRESSLAFF
and Ensemble

Friday, April 26, 1996
8 PM \$10
ATTENACRE FOUNDATION
Reservations, please • 609-921-6900